

Churwell Out of School Group Newsletter

No. 1 May 2000

Introduction

This is the first edition of a Newsletter designed to keep you informed of progress on the project to set up an Out of School Group in Churwell.

Similar proposals are also being made at other schools in Morley. These are all supported by the Leeds City Council's Partnership Unit and aim to increase the availability and choice of childcare in this area.

Proposal

The plans are to relocate, refurbish and equip a temporary building on the school site to provide up to 32 childcare places before school, after school and in holidays. Funding for this is dependent on a bid to the New Opportunities Fund (Lottery money) to cover start up costs. The Group would aim to be self-financing through fees by the second year.

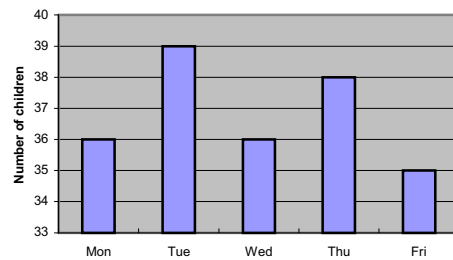
Results of questionnaire

Questionnaires were sent out before Easter to all families with children at Churwell School to assess likely demand for places. 460 were distributed and 76 were returned. 75 families were broadly in favour of setting up a Group and 1 was against. Comments by parents suggested there was a lack of available childcare in Churwell, which affected choices in relation to working patterns and taking up training opportunities.

'Breakfast Club'

43 children would be interested in attending a before school club in 2000-01. These were split evenly between children in Key Stage 1 (Reception, Year 1 and Year 2) and Key Stage 2 (Years 3 to 6). Demand for places varies each day:

Demand for before school places

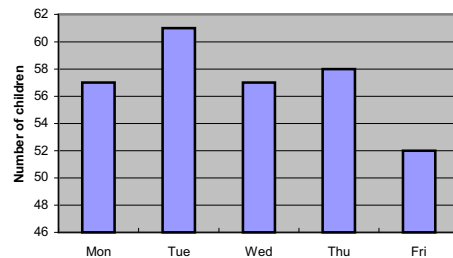


A further 18 children would be interested in later years or when child starts school.

After school club

69 children would be interested in attending an after school club in 2000-01. This is made up of 32 KS1 children and 37 in KS2. Demand for places varied:

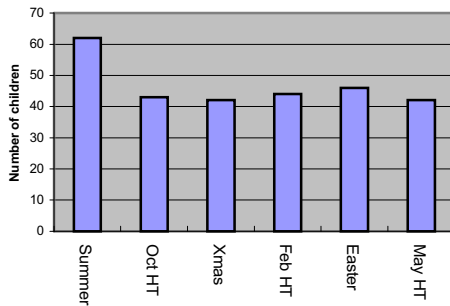
Demand for after school places



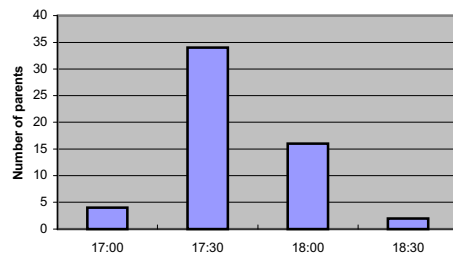
Holidays and training days

71 children would be interested in attending a holiday playscheme. Again an even split between KS1 (36 children) and KS2 (35 children). Demand for training days was 44 places while for holidays:

Demand for holiday places



Preferred finish time in holidays

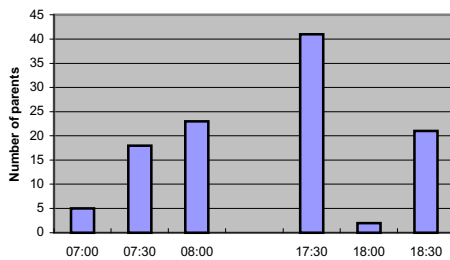


Preferred finish times before 5 p.m. are included in the 17:00 column.

Opening times

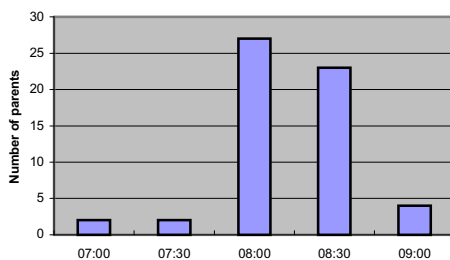
Parents preferred times ranged from a 7:00 a.m. start to 6:30 p.m. finish. Preferred times for term time were:

Preferred start and finish times



Preferred times for holiday playscheme to start were:

Preferred start time in holidays

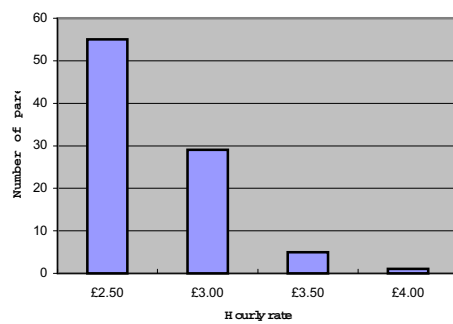


Preferred times for holiday playscheme to finish were:

Fees

Parents were asked what a reasonable charge per hour for the before and after school clubs. Responses were:

What is a reasonable charge in term time?

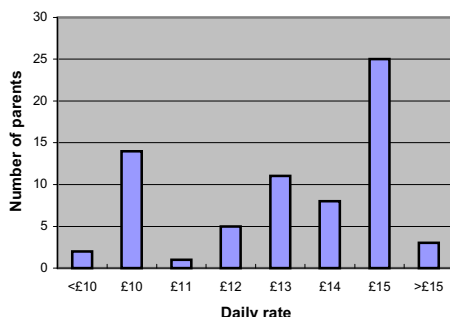


Parents who indicated a range of prices are included in each column.

The club will charge a session fee in common with other groups but this will be based on a reasonable hourly rate comparable to other local childcare providers. Several parents indicated that a reduction for the second or third child in a family would be preferred. This would be in line with other childcare providers.

Parents were asked to indicate what they considered to be a reasonable charge per day for a holiday scheme. Responses were:

What is a reasonable charge in holidays?



Again, parents indicating a range of fees are included in each relevant column. One parent preferred an hourly rate rather than a daily rate.

Who will run the Group?

The initial plans were formulated and a bid for funding prepared by a small Steering Group.

The next step will be to set up a Management Committee to oversee the operation of the Out of School Group by setting the strategic direction and monitoring quality standards. The Committee would be made up of volunteers from parents, staff and local community. The exact format and constitution of the Committee needs to be agreed but it is expected that volunteers would take on lead roles such as Chair, Vice Chair, Secretary, Treasurer, Personnel, Quality, Health & Safety, Publicity etc. A range of skills will be needed and all help would be welcome. 26 parents expressed an interest in being involved in the Management Committee and we will be in touch with them when we have more information.

Staffing

The day to day running of the Clubs will be the responsibility of the Play Leader. Staffing levels will meet Social Services registration requirements (1 member of staff to 8 children) with a minimum of 50% qualified. We are planning in the long term to employ 5 members of staff for 32 places.

Premises

The building will be self-contained with its own toilets and kitchen area. It will be furnished and equipped to be more like home than like school. The exact layouts will depend on the size and shape of the building but different areas will be

created for different types of activities. Play equipment and resources will be bought to suit the full age range.

What happens next?

A joint bid to the New Opportunities Fund (NOF) will be made by Groups based at several schools in Morley by 15th June. This bid will be supported by the Partnership Unit at Leeds City Council.

A decision will be made by 31st October 2000 and, if successful, funds will be released so the next stages can begin. A building would be relocated onto the school site and refurbished. Staff recruitment can begin so that the Play Leader can begin the planning and preparation. Once the building is ready, an Open Evening will be held for parents to see the facilities and talk to staff. Bookings would start to be taken ready for a January opening.

Julie Lawlor, Cath Dunn, Maggie Foster